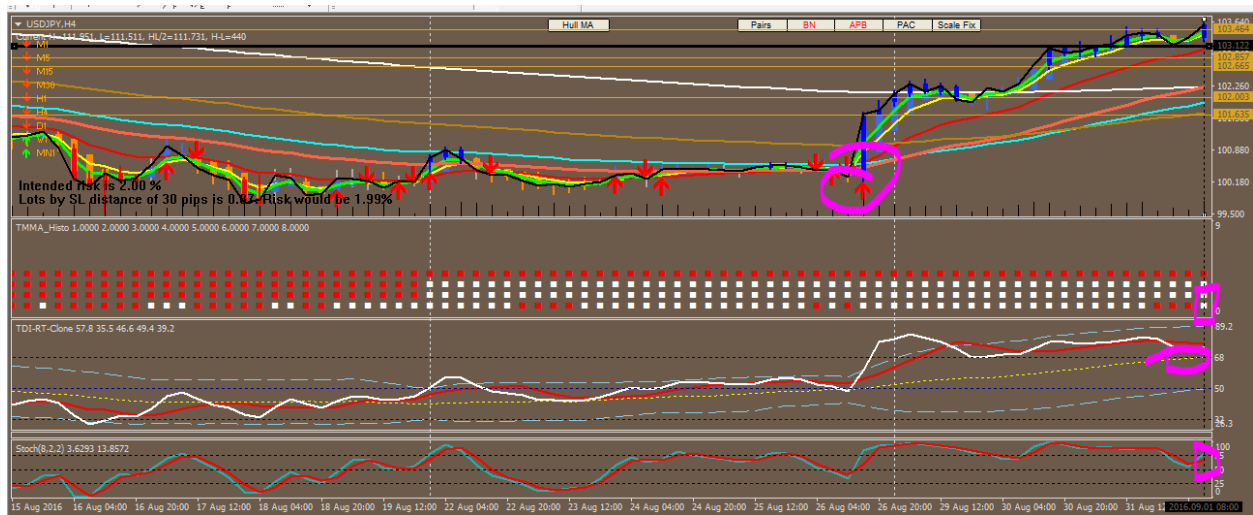
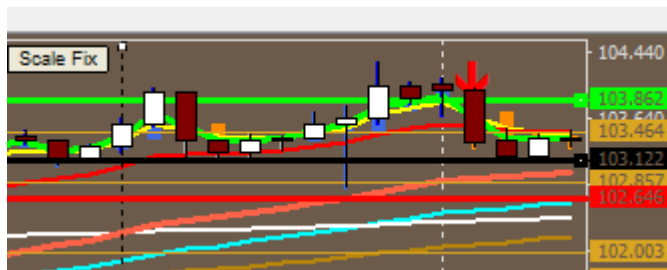


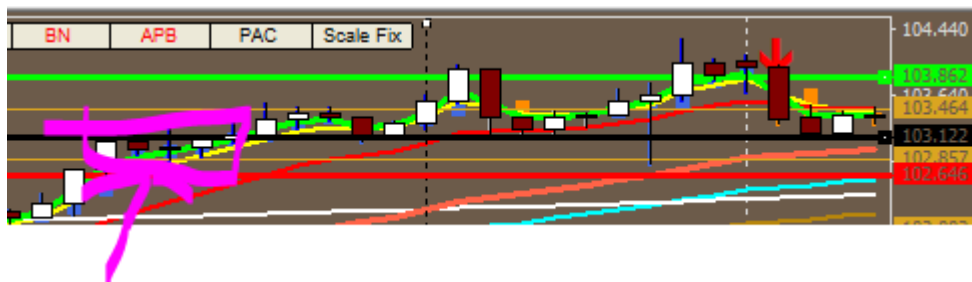
26/5/17 – UJ Sept2017



Stot crashing 75 zones , tdi above yellow , (looking to cross) , price above ema13(redarrow) ,tmma. 4/5 buy signal .SNR based on line graph.



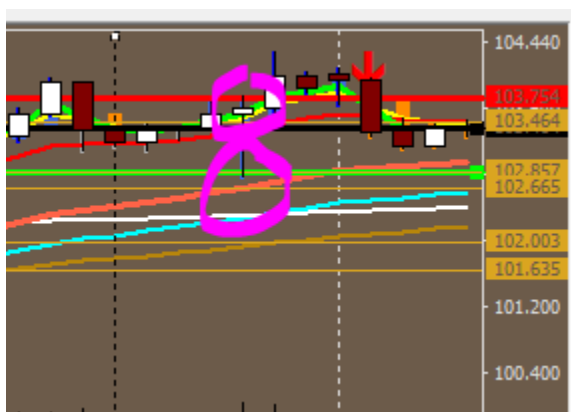
Bounced nicely + 64pips.



SL below the boxes .



3/5 sell signal. SNR with logics. Tp n sl .Tp=must hit , sl avoid .

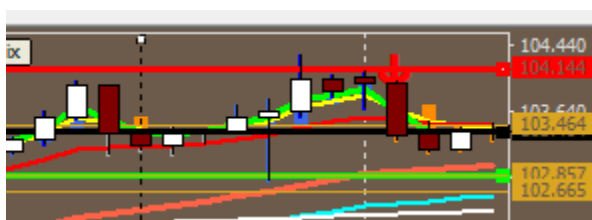


hit sl /tp? I don't know .



Lesson:

probably my sl should be above the box , not in midst.

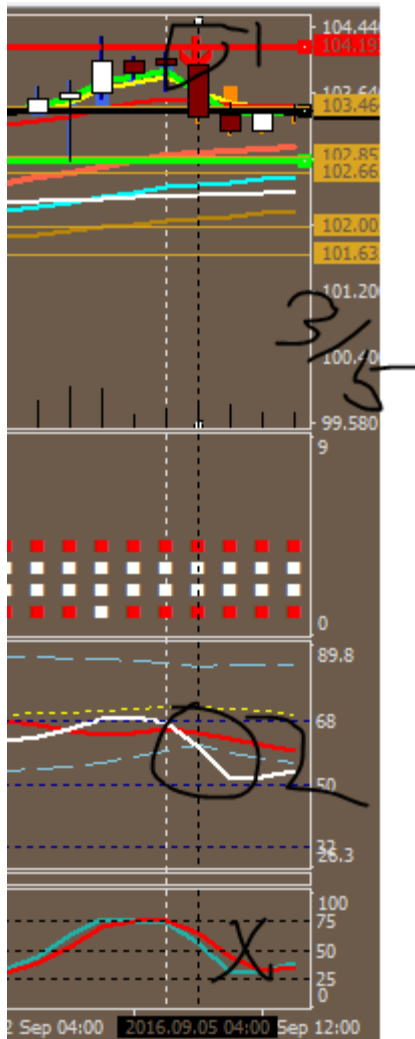


looks better now .

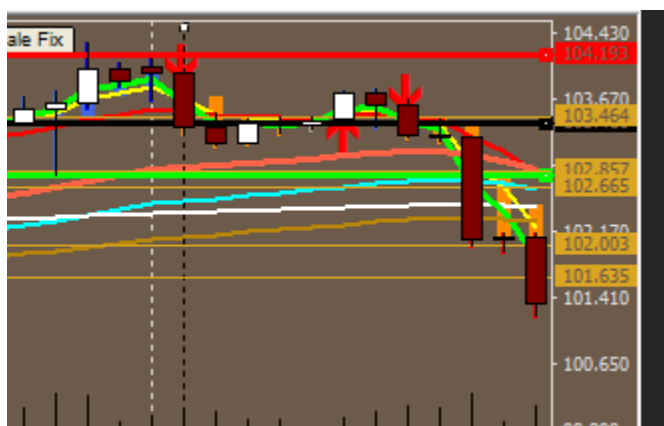


signal but doesn't hit .

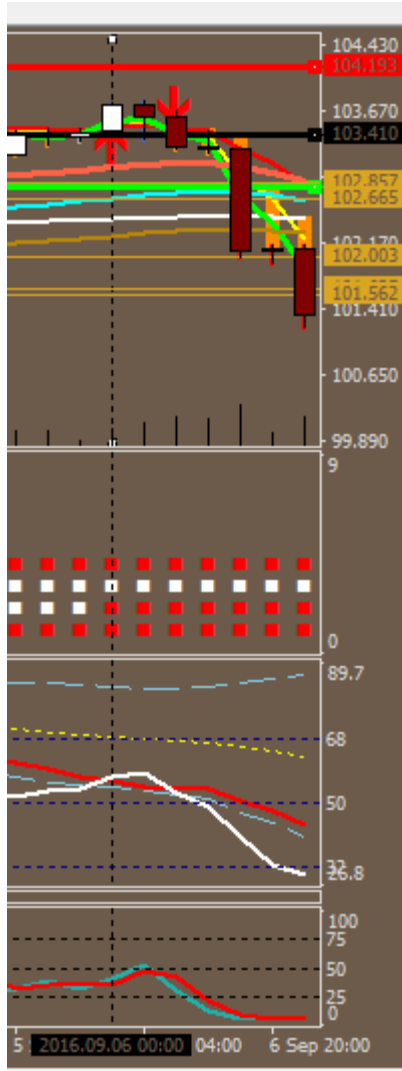
buy



3/5 sell.



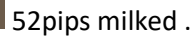
tp-ed 62pips .

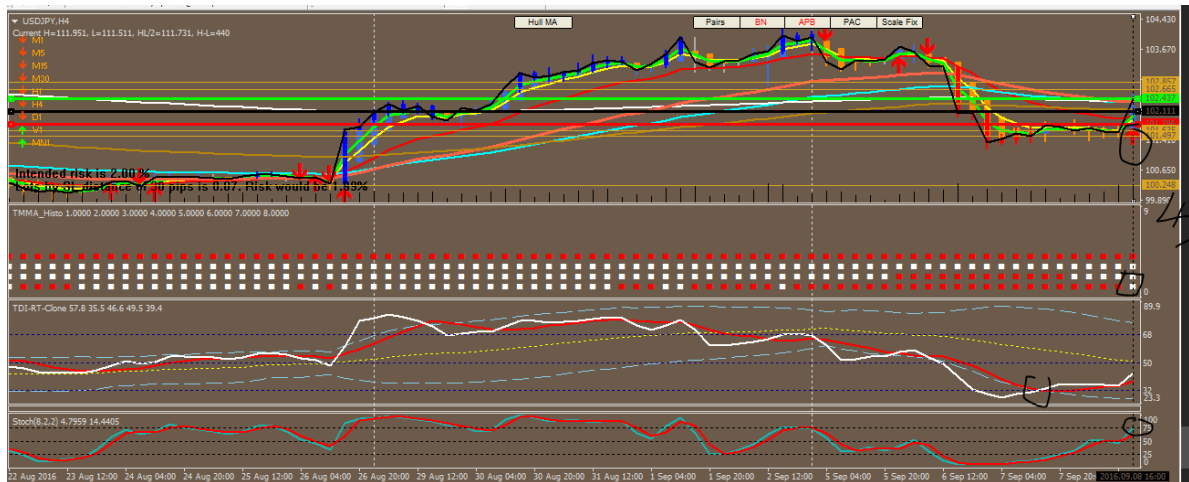


2/5 , avoided .

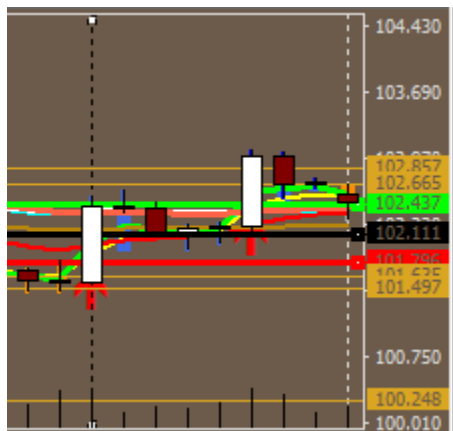


4/5

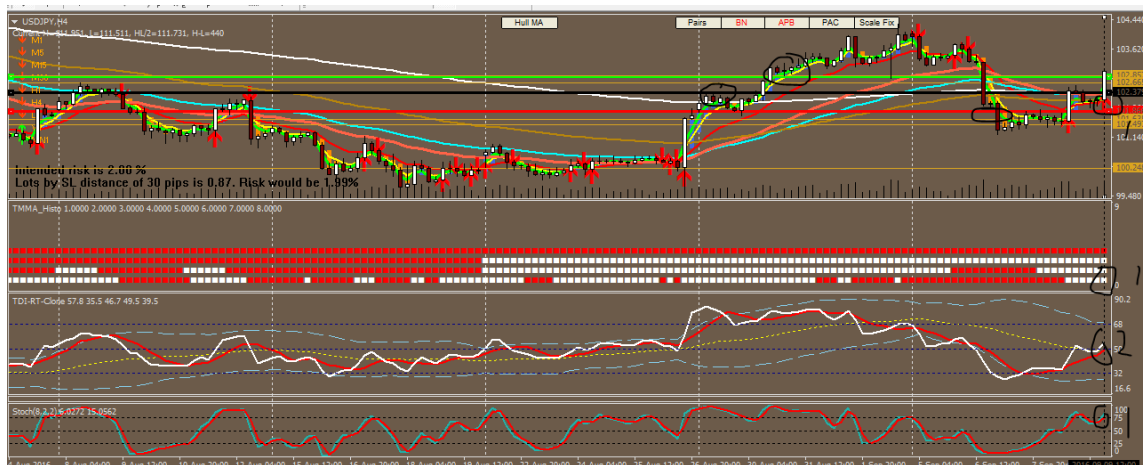




4/5 buy signal .

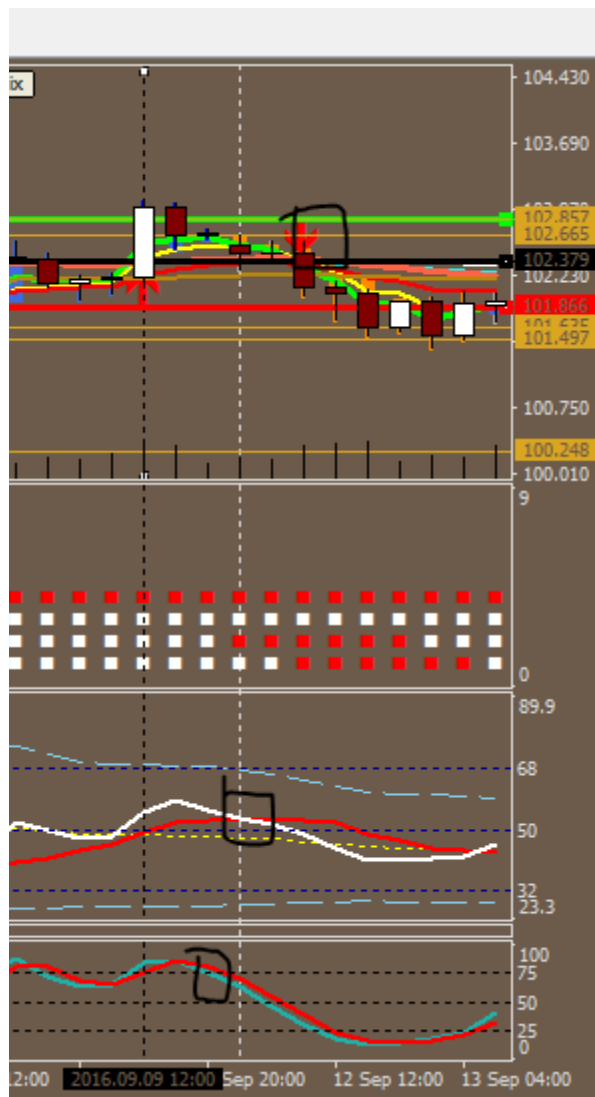


32 pips , damn !

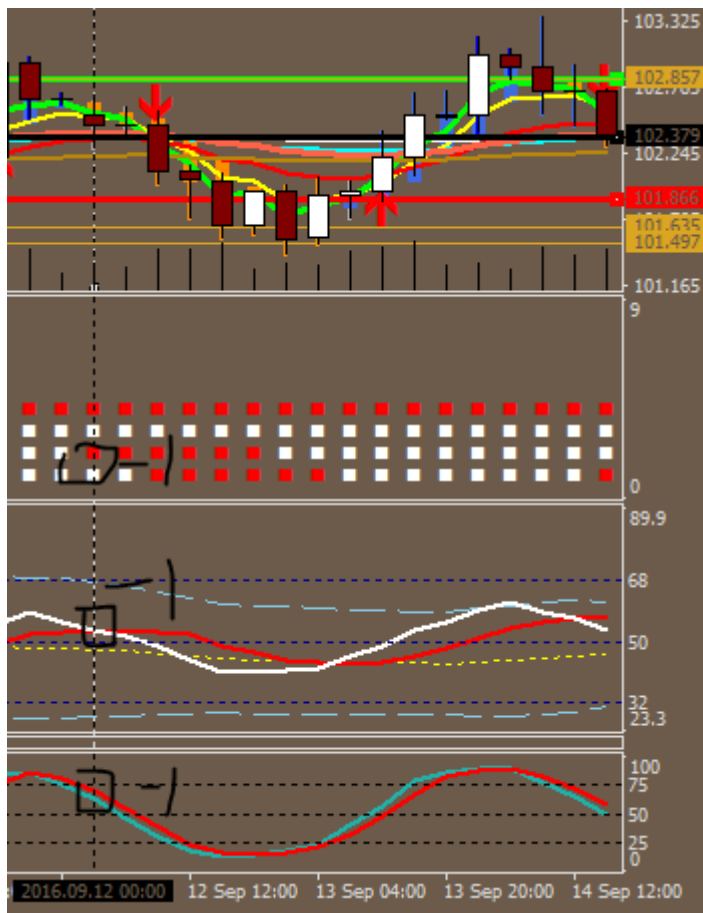


5/5

Let see .



-51 pips , should have paid more attention to the
indis from time to time and exit earlier with profit. When they goes 2/5 1/5 buy signal .



LOOK ! It's 2/5 should have exited !

Lesson learned , that's all for today , insightful journal .